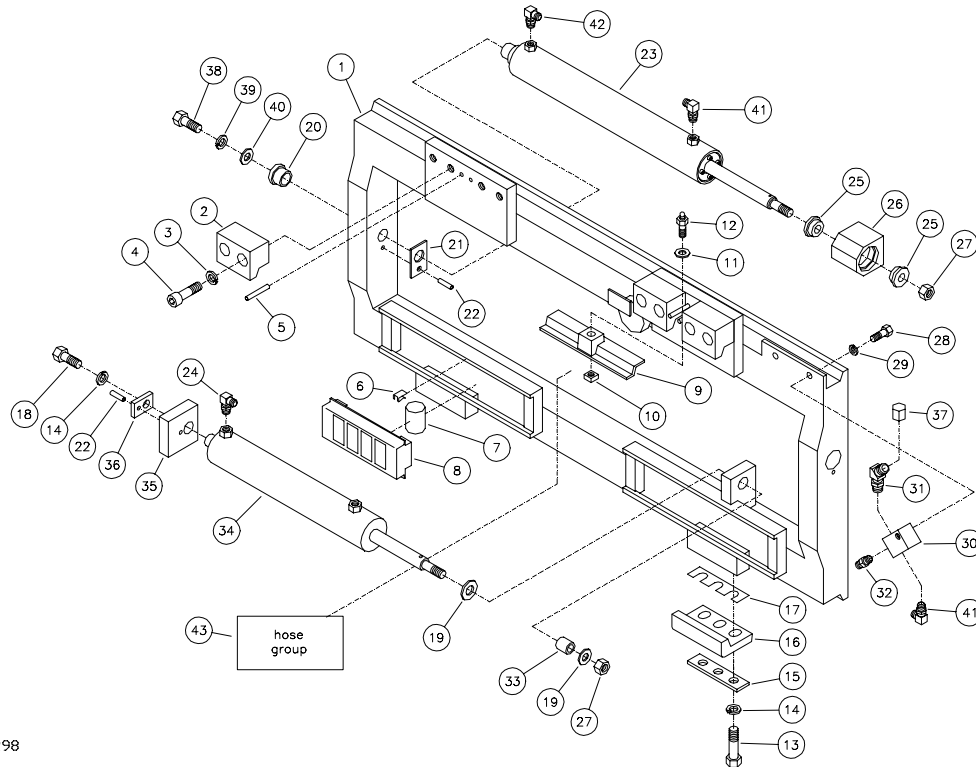


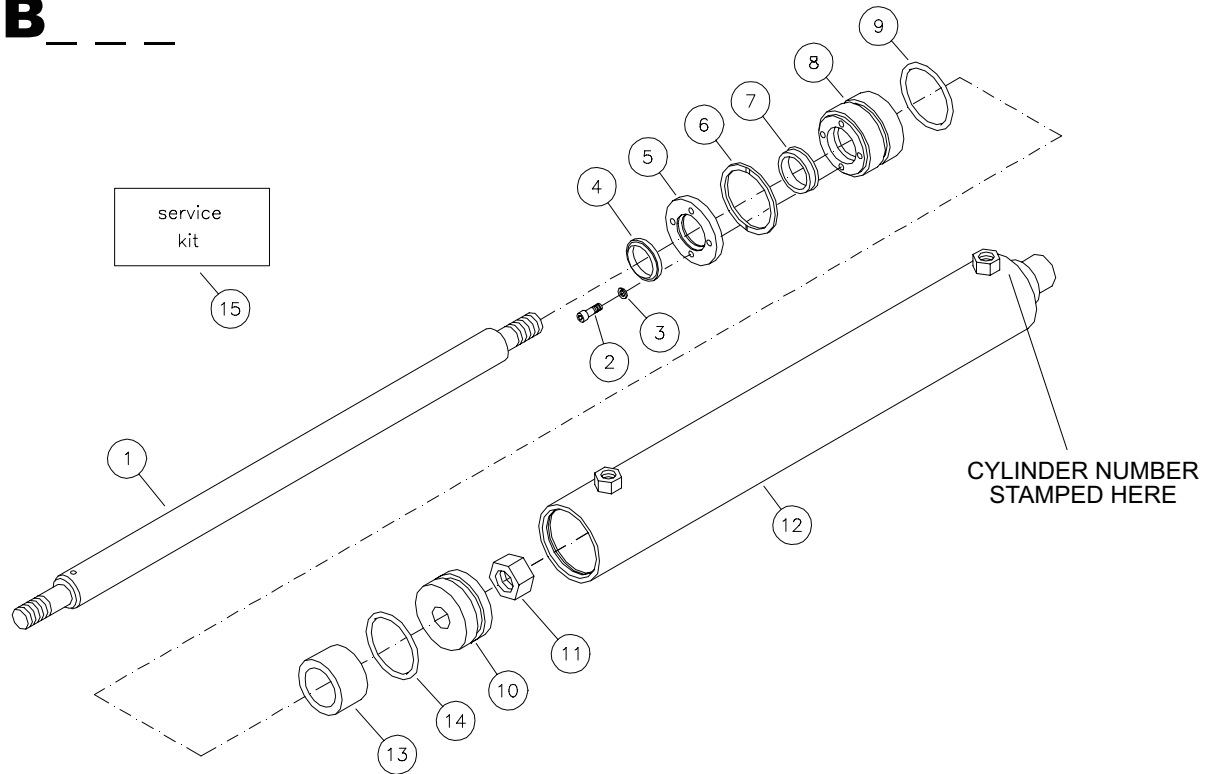
CLASS III SIDE SHIFTING FORK POSITIONER FOR MODELS BEGINNING E9C, E8C, E7C, E6C

G298
10

| ITEM | REQ'D | PART # | DESCRIPTION | ITEM | REQ'D | PART # | DESCRIPTION |
|------|-------|-------------|-----------------------|------|-------|-------------|----------------------|
| 1. | 1 | 204-007* | FORK POSITIONER | 23. | 2 | C-1B* | CYLINDER |
| 2. | 4 | 006-006 | HOOK | 24. | 2 | 120-051-002 | FITTING |
| 3. | 8 | 402-017-002 | LOCK WASHER | 25. | 4 | 046-001 | BUSHING |
| 4. | 8 | 403-036-006 | SOCKET HEAD SCREW CAP | 26. | 2 | 101-012 | CYLINDER ANCHOR |
| 5. | 4 | 401-016-002 | ROLL PIN | 27. | 3 | 406-023-001 | NUT |
| 6. | 2 | 417-001 | SPRING CLIP | 28. | 2 | 405-072-001 | CAP SCREW |
| 7. | 8 | 047-004 | ROLLERS HEAT TREATED | 29. | 2 | 402-016-004 | LOCK WASHER |
| 8. | 2 | 003-009 | ROLLER CAGE | 30. | 2 | 119-005-001 | MANIFOLD |
| 9. | 2 | 005-303 | ITA SLIDE/RETAINER | 31. | 2 | 120-064-001 | FITTING |
| 10. | 2 | 406-004-001 | NUT | 32. | 2 | 120-050-004 | FITTING |
| 11. | 2 | 404-002-001 | FLAT WASHER | 33. | 1 | 046-003 | BUSHING |
| 12. | 2 | 408-001 | GREASE FITTING | 34. | 1 | C-330 | CYLINDER |
| 13. | 6 | 405-067-003 | CAP SCREW | 35. | 1 | 101-153-007 | CYLINDER ANCHOR |
| 14. | 7 | 402-016-003 | LOCK WASHER | 36. | 1 | 004-009 | PLATE |
| 15. | 2 | 004-216 | PLATE | 37. | 2 | 120-059-001 | FITTING |
| 16. | 2 | 005-302 | ITA SLIDE/RETAINER | 38. | 2 | 405-068-005 | CAP SCREW |
| 17. | 6 | 041-001 | SHIM | 39. | 2 | 402-016-001 | LOCK WASHER |
| 18. | 1 | 405-067-005 | CAP SCREW | 40. | 2 | 404-009-003 | FLAT WASHER |
| 19. | 2 | 404-009-001 | FLAT WASHER | 41. | 4 | 120-051-003 | FITTING |
| 20. | 2 | 046-004 | BUSHING | 42. | 2 | 120-070-001 | FITTING |
| 21. | 2 | 004-006 | PLATE | 43. | 1 | 127-068* | HYDRAULIC HOSE GROUP |
| 22. | 3 | 401-016-001 | ROLL PIN | | | | |

* Specify fork positioner model or serial number when ordering.

CYLINDER

C-1B _ _ _G90
7

| ITEM | REQ'D | PART # | DESCRIPTION |
|------|-------|-------------|-----------------------|
| 1. | 1 | 104-002* | CYLINDER ROD |
| 2. | 4 | 403-034-002 | SOCKET HEAD CAP SCREW |
| 3. | 4 | 402-016-008 | LOCK WASHER |
| 4. | 1 | 124-007-002 | ROD WIPER |
| 5. | 1 | 107-003-001 | CYLINDER RETAINER |
| 6. | 1 | 410-017-001 | RETAINING RING |
| 7. | 1 | 123-009-004 | ROD SEAL |
| 8. | 1 | 106-003-001 | CYLINDER HEAD |
| 9. | 1 | 121-024-008 | O-RING |
| 10. | 1 | 105-002-001 | CYLINDER PISTON |
| 11. | 1 | 406-023-001 | NUT |
| 12. | 1 | 108-005* | TUBE ASSEMBLY |
| 13. | 1 | 050-001* | SPACER |
| 14. | 1 | 121-023-001 | O-RING |
| 15. | 0 | 900-002-004 | SERVICE KIT |

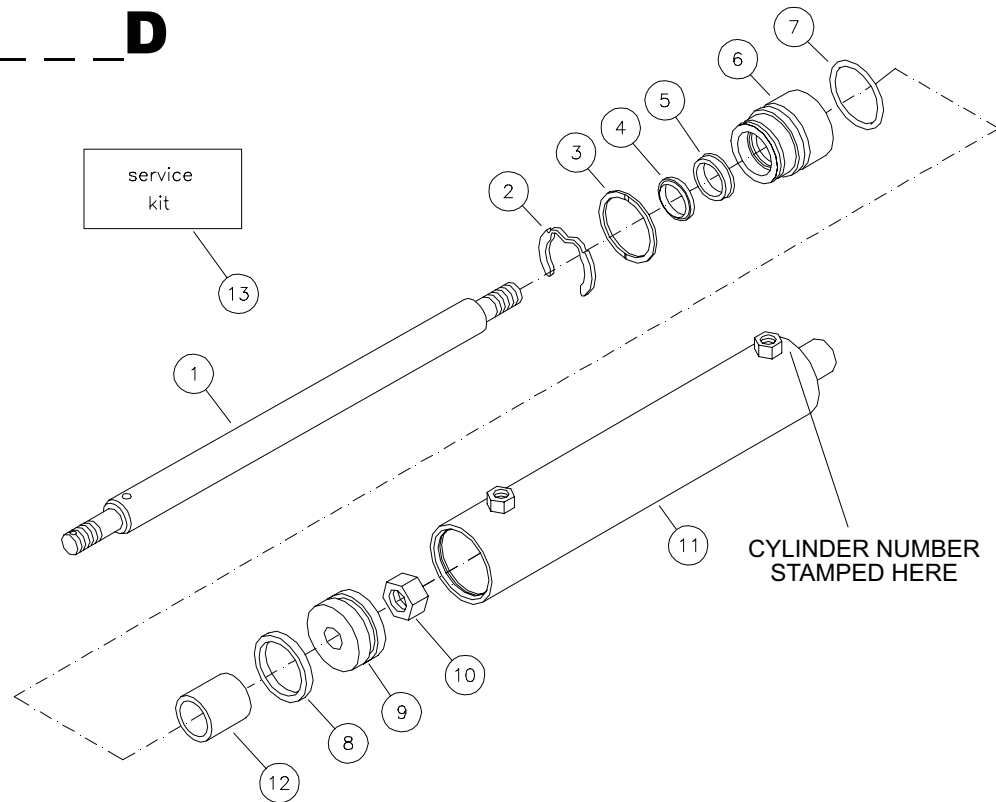
SERVICE KIT NUMBER 900-002-004

| | | |
|---|-------------|-----------------------|
| 1 | 124-007-002 | ROD WIPER |
| 1 | 123-009-004 | ROD SEAL |
| 1 | 121-023-001 | O-RING |
| 4 | 403-034-002 | SOCKET HEAD CAP SCREW |
| 4 | 402-016-008 | LOCK WASHER |
| 1 | 410-017-001 | RETAINING RING |
| 1 | 121-024-008 | O-RING |

* Specify cylinder number, attachment model number, or attachment serial number when ordering.

- All seals are included in service kit. Seals are not sold individually.

CYLINDER C-1B _ _ _ D

G588
7

| ITEM | REQ'D | PART # | DESCRIPTION |
|------|-------|-------------|-----------------|
| 1. | 1 | 104-002* | CYLINDER ROD |
| 2. | 1 | 410-022-001 | RETAINING RING |
| 3. | 1 | 410-017-001 | RETAINING RING |
| 4. | 1 | 124-007-002 | ROD WIPER |
| 5. | 1 | 123-009-004 | ROD/PISTON SEAL |
| 6. | 1 | 106-025-001 | CYLINDER HEAD |
| 7. | 1 | 121-024-008 | O-RING |
| 8. | 1 | 121-023-001 | O-RING |
| 9. | 1 | 105-002-001 | CYLINDER PISTON |
| 10. | 1 | 406-023-001 | NUT |
| 11. | 1 | 108-005* | TUBE ASSEMBLY |
| 12. | 1 | 050-001* | SPACER/TUBE |
| 13. | 0 | 900-014-003 | SERVICE KIT |

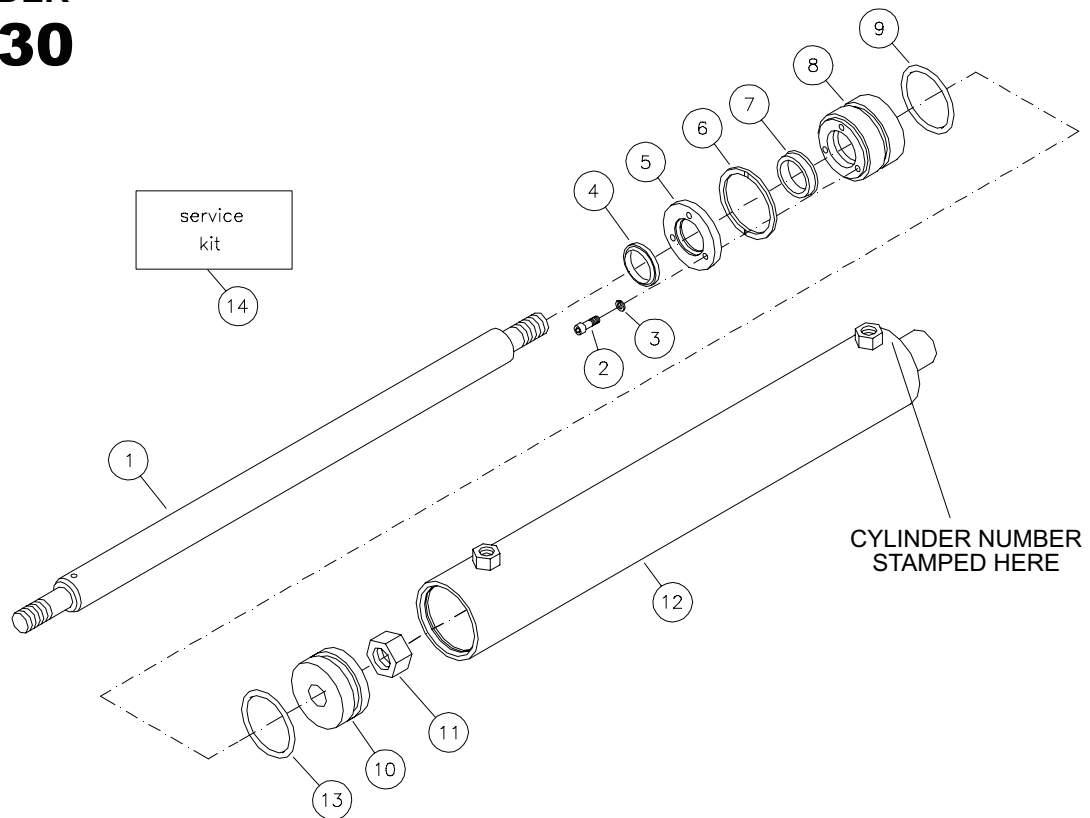
SERVICE KIT NUMBER 900-014-003 INCLUDES

| | | |
|---|-------------|-----------------|
| 1 | 124-007-002 | ROD WIPER |
| 1 | 123-009-004 | ROD/PISTON SEAL |
| 1 | 121-024-008 | O-RING |
| 1 | 410-022-001 | RETAINING RING |
| 1 | 121-023-001 | O-RING |
| 1 | 410-017-001 | RETAINING RING |

* Specify cylinder number, attachment model number, or attachment serial number when ordering.

- All seals are included in service kit. Seals are not sold individually.

CYLINDER C-330

G35
7

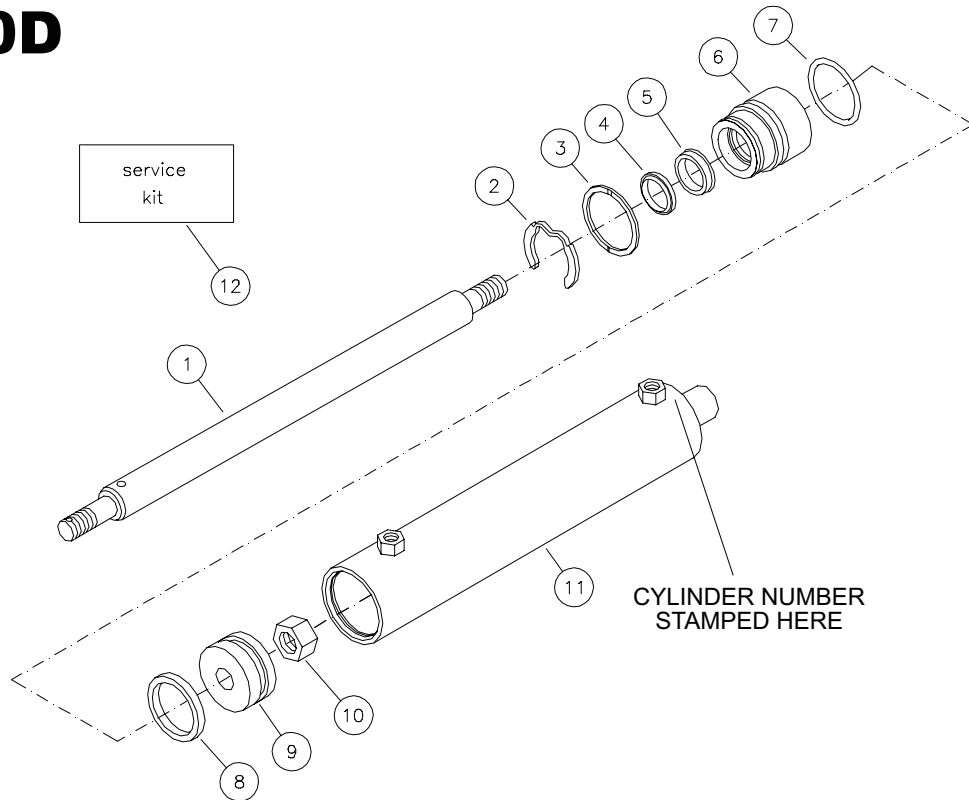
| ITEM | REQ'D | PART # | DESCRIPTION |
|------|-------|-------------|-----------------------|
| 1. | 1 | 104-023-001 | CYLINDER ROD |
| 2. | 3 | 403-034-001 | SOCKET HEAD CAP SCREW |
| 3. | 3 | 402-016-007 | LOCK WASHER |
| 4. | 1 | 124-007-003 | ROD WIPER |
| 5. | 1 | 107-002-001 | CYLINDER RETAINER |
| 6. | 1 | 410-017-001 | RETAINING RING |
| 7. | 1 | 123-009-003 | ROD SEAL |
| 8. | 1 | 106-002-001 | CYLINDER HEAD |
| 9. | 1 | 121-024-008 | O-RING |
| 10. | 1 | 105-002-001 | CYLINDER PISTON |
| 11. | 1 | 406-023-001 | NUT |
| 12. | 1 | 108-007-001 | TUBE ASSEMBLY |
| 13. | 1 | 121-023-001 | O-RING |
| 14. | 0 | 900-002-002 | SERVICE KIT |

SERVICE KIT NUMBER 900-002-002 INCLUDES

| | | |
|---|-------------|-----------------------|
| 1 | 124-007-003 | ROD WIPER |
| 1 | 123-009-003 | ROD SEAL |
| 1 | 121-023-001 | O-RING |
| 3 | 403-034-001 | SOCKET HEAD CAP SCREW |
| 3 | 402-016-007 | LOCK WASHER |
| 1 | 410-017-001 | RETAINING RING |
| 1 | 121-024-008 | O-RING |

- All seals are included in service kit.
Seals are not sold individually.

CYLINDER C-330D



| ITEM | REQ'D | PART # | DESCRIPTION |
|------|-------|-------------|-----------------|
| 1. | 1 | 104-023-001 | CYLINDER ROD |
| 2. | 1 | 410-022-001 | RETAINING RING |
| 3. | 1 | 410-017-001 | RETAINING RING |
| 4. | 1 | 124-007-003 | ROD WIPER |
| 5. | 1 | 123-009-003 | ROD/PISTON SEAL |
| 6. | 1 | 106-022-001 | CYLINDER HEAD |
| 7. | 1 | 121-024-008 | O-RING |
| 8. | 1 | 121-023-001 | O-RING |
| 9. | 1 | 105-002-001 | CYLINDER PISTON |
| 10. | 1 | 406-023-001 | NUT |
| 11. | 1 | 108-007-001 | TUBE ASSEMBLY |
| 12. | 0 | 900-014-001 | SERVICE KIT |

SERVICE KIT NUMBER 900-014-001 INCLUDES

| | | |
|---|-------------|-----------------|
| 1 | 124-007-003 | ROD WIPER |
| 1 | 123-009-003 | ROD/PISTON SEAL |
| 1 | 121-024-008 | O-RING |
| 1 | 410-022-001 | RETAINING RING |
| 1 | 121-023-001 | O-RING |
| 1 | 410-017-001 | RETAINING RING |

- All seals are included in service kit.
Seals are not sold individually.

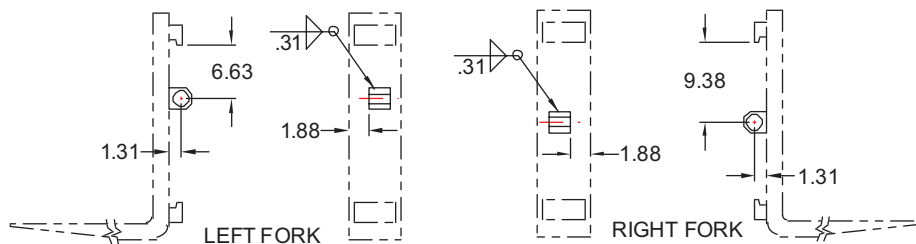
INSTALLATION INSTRUCTIONS FOR ITA CLASS III FORK POSITIONERS

These Instructions cover both side shifting and non-side shifting ITA class III D and E Series models. Fork installation information is included for units without factory supplied forks. Welding is required to install forks and to mount side shifting units.

Please read the instructions completely before you begin. Keep hands and feet free from dangerous positions or pinch points while working. Wear eye protection and appropriate clothing. Use the correct tools. Work in a clean, well lighted area taking care not to contaminate the hydraulic system as serious damage could result. Protect cylinder rods and other critical surfaces from weld spatter or accidental damage.

Installing the Forks *(Skip this procedure if your unit has factory installed forks.)*

1. Remove the fork anchors fastened to the fork positioning cylinder rods.
2. Weld one of the anchors to each fork shank as shown below. Make sure the anchor is level. Forks are made with various alloys. Contact the fork manufacturer for the recommended welding procedure.
3. Loosen the nut on each fork positioning cylinder base enough to push the cylinders back and allow the forks to be loaded through the center notch. Note: left and right are as viewed from the truck seat.



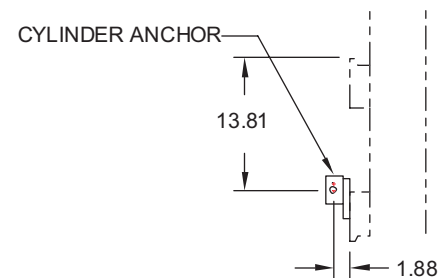
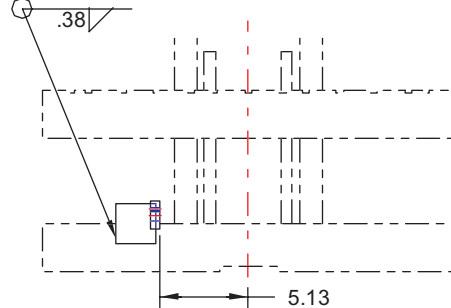
NOTE!

Front mounted backrests require the 1.88 dimension to be reduced by width of mounting flange. Forks may hit when fully retracted.

4. Insert the rod end of the fork positioning cylinder into the appropriate fork anchor, check for proper alignment then tighten the nuts on both ends of the cylinder.

Installing the Side Shift Cylinder Anchor *(Skip this procedure if your unit is non-side shifting.)*

1. Remove the side shift cylinder anchor from the side shift cylinder.
2. Carefully measure the truck carriage face as shown below and mark the cylinder anchor position.
3. Position the cylinder anchor as illustrated and tack weld. Insure that the anchor is perpendicular to the face of the truck carriage. Carriages are made with various alloys. Contact the truck manufacturer for the recommended welding procedure. Finish weld as indicated.



Mounting the Attachment

1. Remove the lower retainers.
2. Hang the Fork Positioner on the truck carriage, install the side shift cylinder and reinstall the retainers using shims as required.

If you have any questions or comments call (503)-556-1761 for technical assistance. Thank you for using Rightline products.